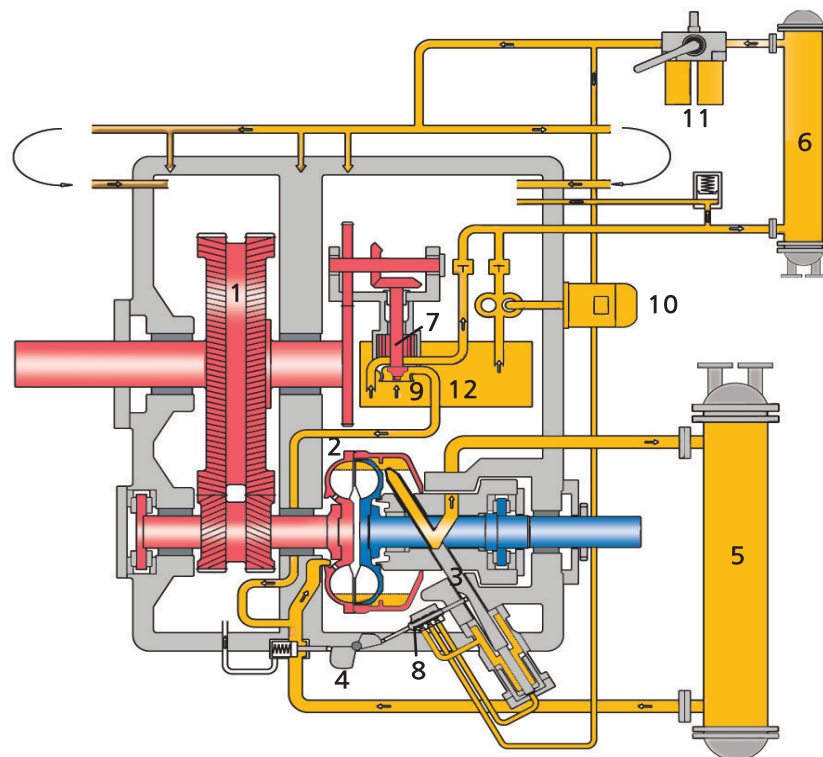


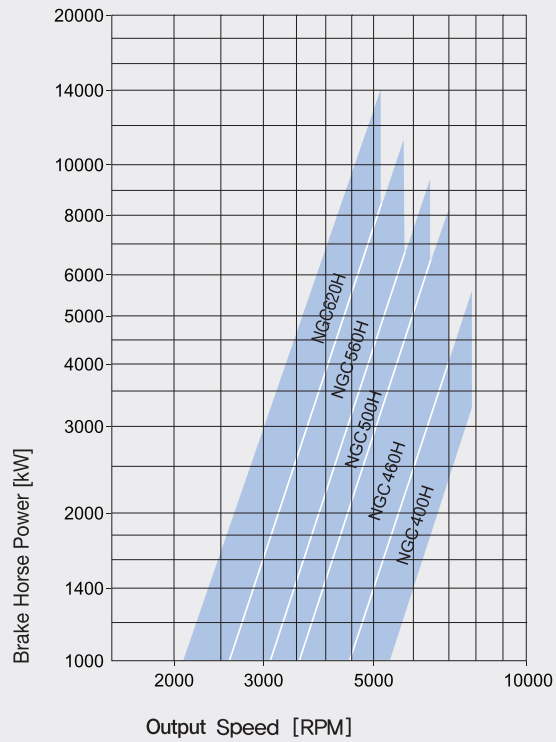
Type NGC-H

- Variable Speed Fluid Coupling integrated with Step-up Gear
- Particularly for Higher Out Speed control by Step-up gear both at the input and the output side
- Self-Supporting design with Horizontally Split Housing
- Sleeve bearing for high-speed application
- Internal gear driven oil pump
- Space optimized by Combination of Integrated Step-up Gear and Fluid Coupling
- Vibration damping
- Relieved motor start-up and smooth acceleration of heavy load

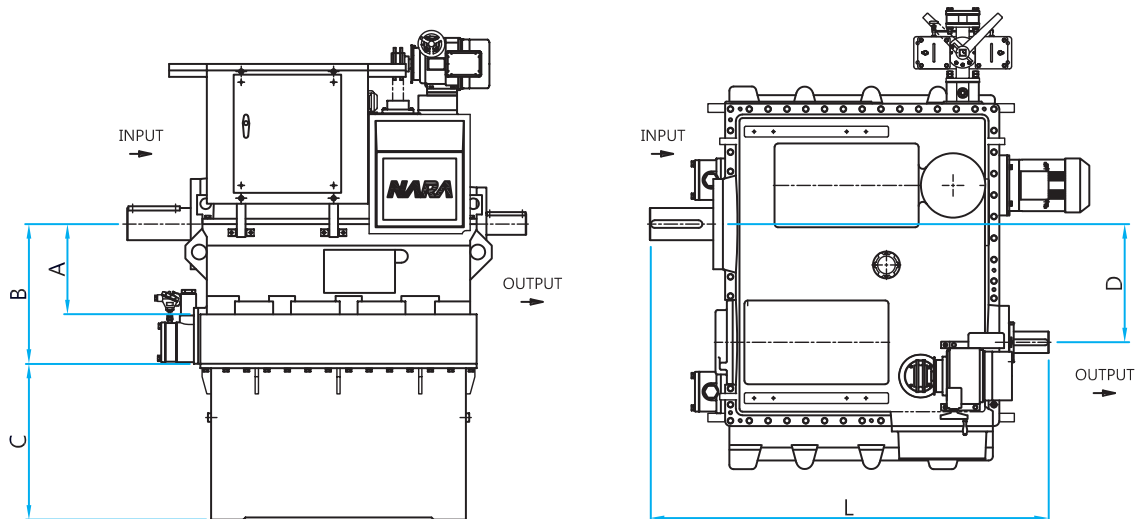


- | | | | |
|-----------------------|--------------------|---------------------|---------------------|
| 1. Helical Gear | 2. Fluid Coupling | 3. Scoop Tube | 4. Actuator |
| 5. Working Oil Cooler | 6. Lub. Oil Cooler | 7. Lub. Oil Pump | 8. Control Valve |
| 9. Working Oil Pump | 10. Aux. Oil Pump | 11. Lub. Oil Filter | 12. Inside Oil Tank |

Selection



• This table can be applied for 50Hz and 60Hz facility.



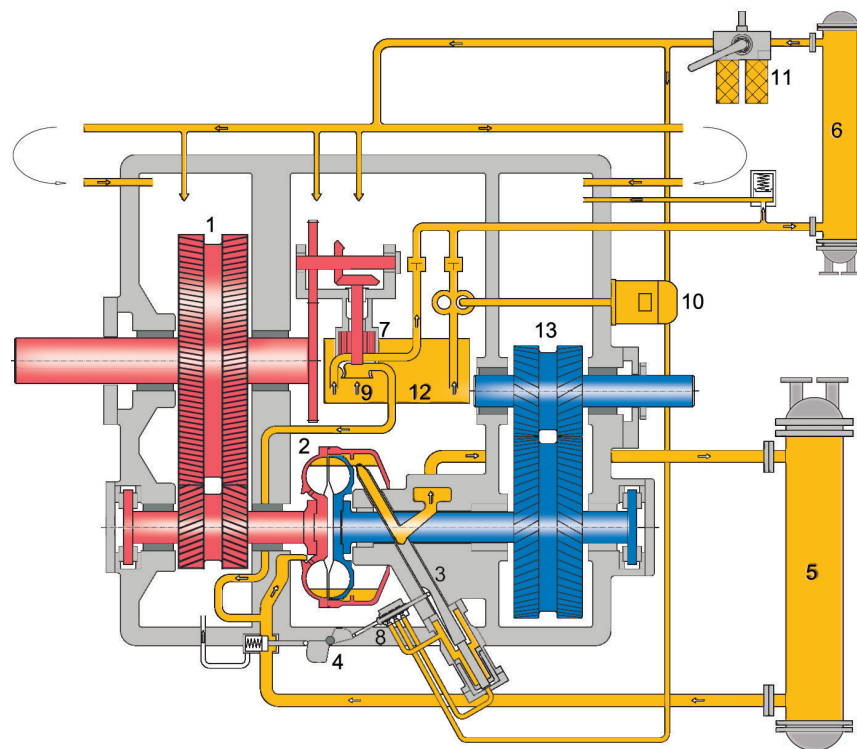
(Unit: mm)

SIZE	A	B	C	D	L	Weight (kgf)
NGC400H	370	550	700	530	1550	3900
NGC460H	420	650	925	550	1855	4900
NGC500H	420	650	1025	550	1855	5600
NGC560H	520	750	1125	550	2200	8500
NGC620H	520	750	1125	550	2200	9100

• Dimensions are subject to alteration without notice.

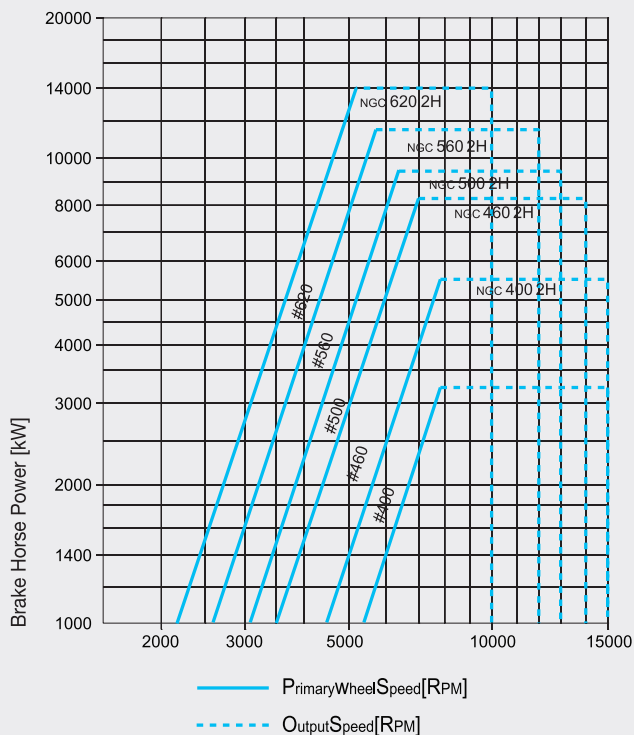
Type NGC-2H

- Variable Speed Fluid Coupling integrated with Two stage Step-up Gear
- Particularly for Higher Out Speed control by Step-up gear both at the input and the output side
- Self-Supporting Design with Horizontally Split Housing
- Sleeve bearing for high-speed application
- Internal gear driven oil pump
- Space optimized by Combination of Integrated Step-up Gear and Fluid Coupling
- Vibration damping
- Relieved motor start-up and smooth acceleration of heavy load

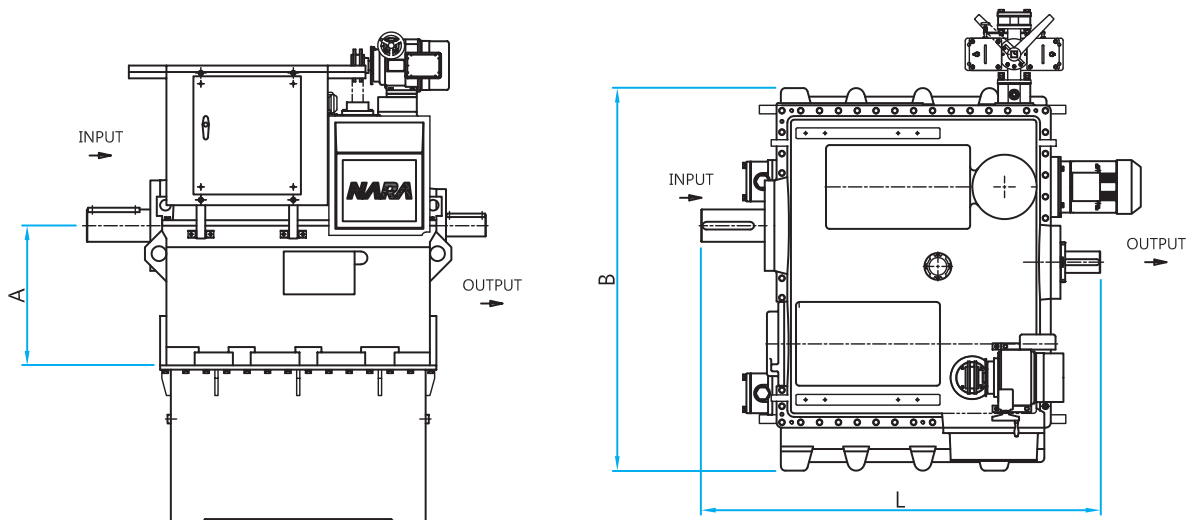


- | | | | |
|-----------------------|--------------------|---------------------|---------------------|
| 1. 1st Step-up Gear | 2. Fluid coupling | 3. Scoop tube | 4. Actuator |
| 5. Working Oil Cooler | 6. Lub. Oil Cooler | 7. Lub. Oil Pump | 8. Control Valve |
| 9. Working Oil Pump | 10. Aux. Oil Pump | 11. Lub. Oil Filter | 12. Inside Oil Tank |
| 13. 2nd Step-up Gear | | | |

Selection



• This table can be applied for 50Hz and 60Hz facility.



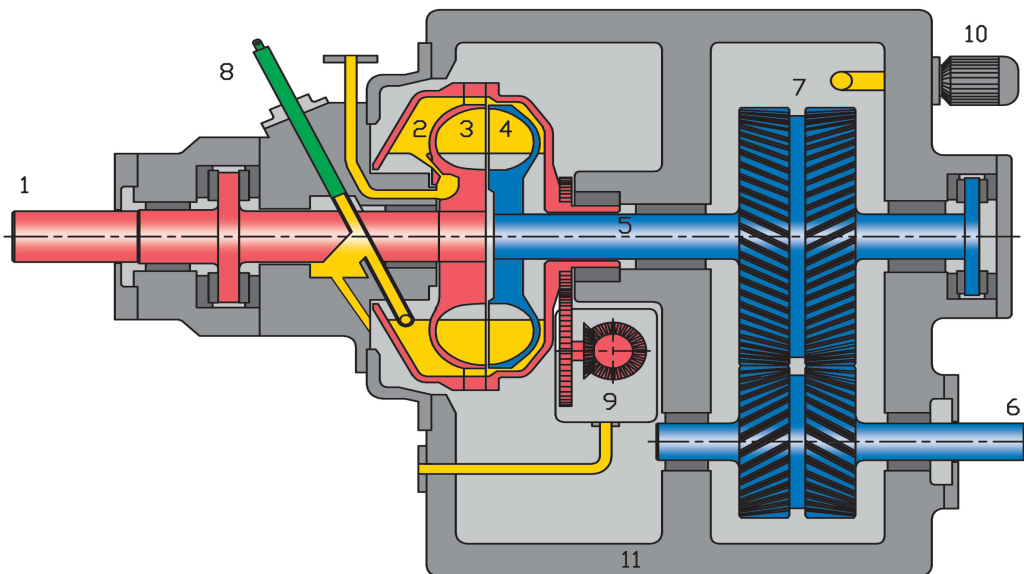
(Unit: mm)

SIZE	A	B	L	Weight (kgf)
NGC400 2H	700	1640	2000	7000
NGC460 2H	750	1820	2250	8000
NGC500 2H	750	1820	2250	8500
NGC560 2H	790	1940	2531	10000
NGC620 2H	790	1940	2531	11000

• Dimensions are subject to alteration without notice.

Type NGC-L

- Variable speed Fluid coupling with integrated Step-up gearing
- Step-up gear located at Output side of Fluid coupling
- Suitable for High power and high speed facilities, e.g. high speed compressor
- Self-supporting design with Horizontal Split Housing
- Sleeve bearing for high-speed application
- Integrated Gear pump for oil circulation and external Auxiliary lubrication oil pump
- Space optimized by combination of integrated Step-up Gear and Fluid coupling
- Vibration damping
- Relieved motor start-up and smooth acceleration of heavy load



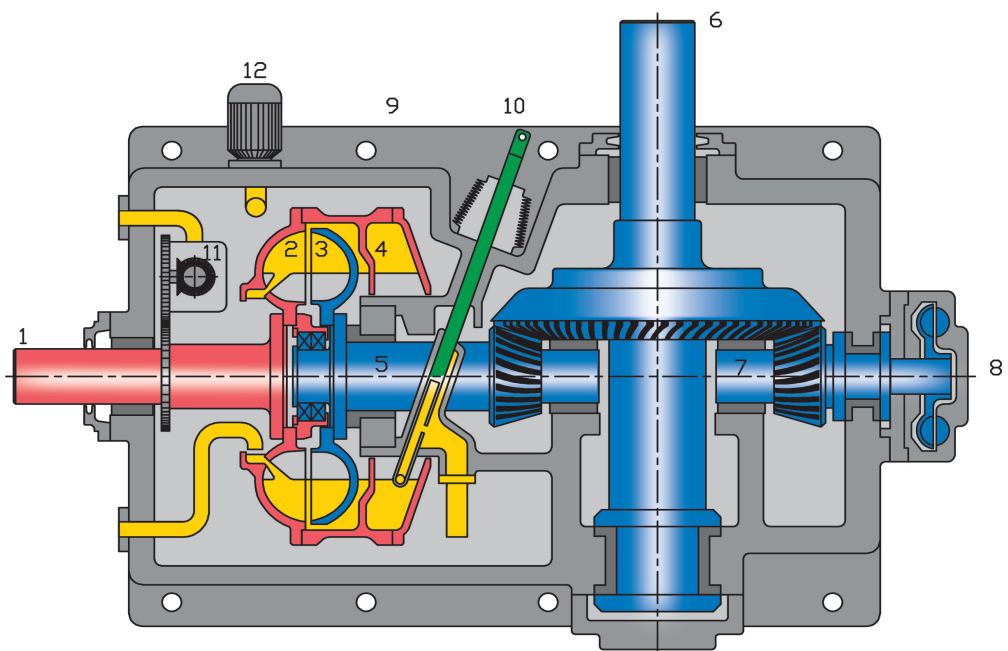
- 1. Input Shaft
- 4. Turbo Wheel
- 7. Step-up Gear (Helical Gear)
- 10. Aux. Lub. Oil Pump

- 2. Shell
- 5. Turbo wheel Shaft
- 8. Scoop Tube
- 11. Housing with Oil Tank

- 3. Pump Wheel
- 6. Output Shaft
- 9. Oil Pump

Type NGC-R

- Variable speed Fluid coupling with integrated Reduction gearing
- Reduction gear located at Output side of Fluid coupling, Bevel gear or Helical gear available.
- Suitable for large Inertia machinery, e.g. Crusher, Coal mill, Beater wheel mill, Low speed pump and Low speed Fan etc.
- With hydrodynamic brake (optional), heavy mass driven machine can be rapidly decelerated.
- Self-supporting Design with Horizontal Split Housing
- Integrated Gear pump for oil circulation and external Auxiliary lubrication oil pump
- Space optimized by combination of integrated Step-up Gear and Fluid coupling



1. Input Shaft

4. Shell

7. Brake Shaft with Bevel Pinion

10. Scoop Tube

2. Pump Wheel

5. Turbo wheel Shaft with Bevel Pinion

8. Hydro Dynamic Brake

11. Oil Pump

3. Turbo Wheel

6. Output Shaft with Bevel Gear

9. Housing with Oil Tank

12. Aux. Lub. Oil Pump